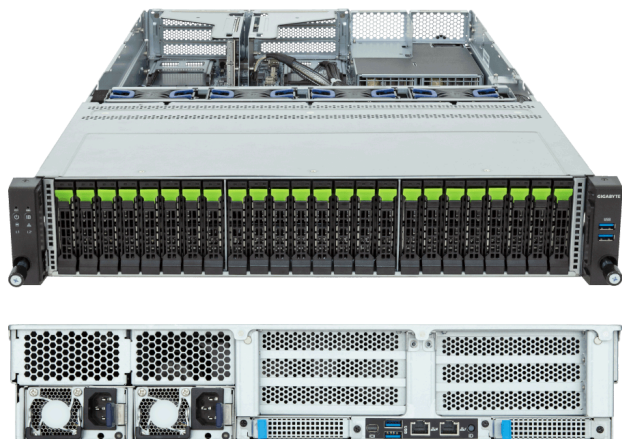


# R263-Z36-AAV1 (Rev. 3.x)

Rack Server - AMD EPYC™ 9005/9004 Server Processors -  
2U UP 24-Bay Gen5 NVMe Titanium



## Key Features

- Single AMD EPYC™ 9005/9004 Server Processors
- 12-Channel DDR5 RDIMM per CPU with 12 x DIMMs
- 1 x 1 Gb/s LAN port via Intel® I210-AT
- 24 x 2.5" Gen5 NVMe hot-swap bays
- 1 x M.2 slot with PCIe Gen3 x4
- 1 x FHHL PCIe x16 slot with Gen5 x16 lanes
- 1 x OCP NIC 3.0 PCIe Gen5 x16 slot
- Compatible with SupremeRAID™ by Graid Technology
- 1+1 1600 W 80 PLUS Titanium redundant power supplies

## Applications

Networks Server, Servers for Hybrid/Private Cloud...

## Specification

<b>Dimensions</b>	2U (W438 x H87.5 x D710 mm)	<b>PCIe Expansion Slots</b>	1 x FHHL x16 (Gen5 x16) 1 x OCP NIC 3.0 (Gen5 x16), Support NCSI
<b>Motherboard</b>	MZ33-DC1	<b>I/O Ports</b>	<b>Front:</b> 2 x USB 3.2 Gen1 <b>Rear:</b> 2 x USB 3.2 Gen1, 1 x Mini-DP, 1 x RJ45, 1 x MLAN
<b>CPU</b>	AMD EPYC™ 9005 Server Processors AMD EPYC™ 9004 Server Processors Single processor - cTDP up to 400 W (-ACV1) [1] - cTDP up to 500 W (-ADV1)  [1] Supports cTDP up to 500 W at 25°C ambient.	<b>Backplane Board</b>	PCIe Gen5 x4
<b>OS Compatibility</b>	<a href="#">OS Support List</a>	<b>TPM</b>	1 x TPM header (SPI), Optional TPM 2.0 kit: CTM012
<b>Socket</b>	1 x LGA 6096 (Socket SP5)	<b>Power Supply</b>	1+1 1600 W 80 PLUS Titanium redundant power supplies AC Input: 100-240 V
<b>Chipset</b>	System on Chip	<b>System Management</b>	ASPEED® AST2600 Baseboard Management Controller GIGABYTE Management Console web interface
<b>Memory</b>	12-Channel DDR5 RDIMM, 12 x DIMMs [EPYC 9005] Up to 6400 MT/s [EPYC 9004] Up to 4800 MT/s	<b>System Fans</b>	4 x 80x80x38mm
<b>LAN</b>	1 x 1 Gb/s LAN (1 x Intel® I210-AT), Support NCSI 1 x 10/100/1000 Mb/s Management LAN	<b>Operating Properties</b>	Operating: 10°C to 30°C, 8% to 80% (non-condensing) Non-operating: -40°C to 60°C, 20% to 95% (non-condensing)
<b>Video</b>	Integrated in ASPEED® AST2600 - 1 x Mini-DP	<b>Packaging Content</b>	1 x R263-Z36-AAV1 1 x CPU heatsink 1 x Mini-DP to D-Sub cable 1 x 2-Section Rail kit
<b>Storage</b>	<b>Front hot-swap:</b> 24 x 2.5" Gen5 NVMe [1] <b>Internal M.2:</b> 1 x M.2 (2280/22110), PCIe Gen3 x4  [1] NVMe supported only.	<b>Ordering Part Numbers</b>	Up to 400 W CPU: 6NR263Z36DR000ACV1* Up to 500 W CPU: 6NR263Z36DR000ADV1*
<b>RAID</b>	Require RAID add-in cards  <b>Optional compatible RAID Cards:</b> NVMe/NVMe-oF RAID Cards with SupremeRAID™ by Graid Technology RAID Card models: SR-1000-FD32, SR-1010-FD32 Support RAID 0/1/5/6/10	<b>Optional Parts</b>	- RAID card (SR-1000-FD32): 25FC1-SRBUN0-AFS - RAID card (SR-1010-FD32): 25FC1-SRBUN4-AFR - 3-Section Rail kit (Supports CMA): 25HB2-A56120-K0R - Cable Management Arm: 25HBZ-R18100-K0R



Learn more at: <https://www.gigabyte.com/Enterprise>

\* All specifications are subject to change without notice. Please visit our website for the latest information.

\* All trademarks and logos are the properties of their respective holders.

© 2026 Giga Computing Technology Co., Ltd. All rights reserved.

Last updated: Jun 22, 2026

Designed by

